

FRONT ELEVATION

240# S.S. ASPHALT SHINGLES ON
15# FELT W/ ICE SHIELD 3' UPON O.H.
1/2" O.S.B. W/ H-CLIPS
ROOF TRUSSES 24" O.C.
DESIGNED BY SUPPLIER

FASCIA & SOFFIT W/ VENTS
TO MATCH EXISTING

24" O.H.

6 PITCH

PITCH 12/3

2X4 CONT. PURLINS
FINISHED CLG. MAT'L.

TYP. EXT. WALL
SIDING TO MATCH EXIST'G

2X4 STUDS 16" O.C.
FINISHED WALL MAT'L.

3/4" T&G T. PLYWD GLUED &
NAILED TO 2X10 T. JOISTS
@ 16" O.C.

3: 2X10 TREATED WD. BM.

6"X6" T. POST

PIN

CONC. PIER BLK.

MIN. 12"

POURED CONC. FTG.

FLARE POST
FOOTINGS

PLEASE NOTE:

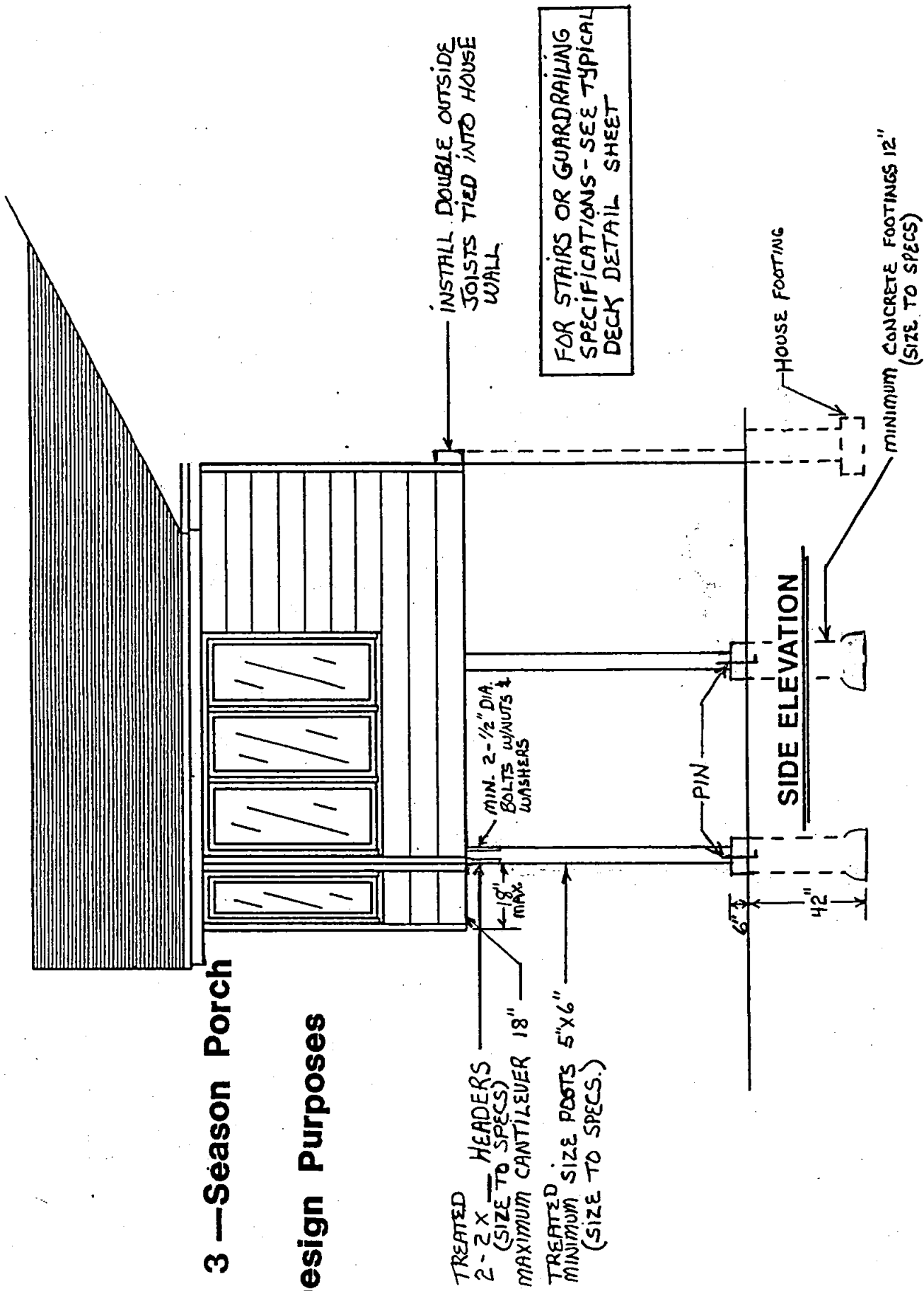
NO HEAT RUNS IN 3 SEASON
PORCH! NOR ANY APPLIANCE
USING FOSSIL FUELS

DOUBLE OUTSIDE JOISTS TIED INTO
HOUSE WALL

LAG SCREWS STAGGERED 16" O.C
MIN. 7/16" DIA.

**Typical 3-Season Porch
for Design Purposes**

Typical 3 — Season Porch for Design Purposes



R-109.1.2 - PLUMBING, MECHANICAL, GAS AND ELECTRICAL SYSTEMS INSPECTION. Rough inspection of plumbing, mechanical, gas and electrical systems shall be made prior to covering or concealment, before fixtures or appliances are set or installed, and prior to framing inspection.